



a year of

R esilienc

Annual Meeting 2020-2021

Welcome

Amy O'Leary
Executive Director

Annual Meeting 2020-2021 |
Resilience



President's Report

Glenn Schneider
YS Board President

Annual Meeting 2020-2021 |
Resilience



Tom Klise
YS Immediate Past President

Slate Presentation

Annual Meeting 2020-2021 |
Resilience



Introducing

Jeff Thoelecke
Incoming YS Board President

Annual Meeting 2020-2021 |
Resilience



Financials

FY2021 Highlights

Steve Koltun
YS Board Treasurer





Revenue

Similar revenue level as prior year **\$1.9M**

Higher fee income as we continue to expand our counseling services as the demand continues to increase

Expanded services with local schools

Event fundraising was down, this was offset substantially by increases in government and individual contributions

State of IL significant contribution expected in FY22 for the first time in several years



Personnel

Expenses in line with plan and prior year, with increases expected for FY22 to support organization's growth and agency needs





Expenses

Break-even year totaling **\$1.94M**

excluding two non-recurring substantial contributions

Achieved agency budget

Maintained similar allocation to prior year:

74% Programming

15% Fundraising

11% General & Administrative

Balance Sheet

Strong position with investment portfolio

Lisa Hanneman
YS Development Director

Development Report

Annual Meeting 2020-2021 |
Resilience





Fundraising Highlights

Events were greatly impacted, but individual donations experienced growth

Limited In-Person Event	Virtual Event	Revenue Recovery Event
Golf Outing	Pride Event Spring Gala Chili Cook-off & Trivia	Holiday Variety Show Window Painting Project

Volunteers



Developed on-site and off-site volunteer opportunities to take advantage of volunteer's available time and talents

Holiday Gift program and Study Buddies

100+ volunteers helped with our **Community Window Painting Project** to share joy and brighten Glenview in May

Volunteers have been invited back into the building and limited groups started scheduling opportunities to help



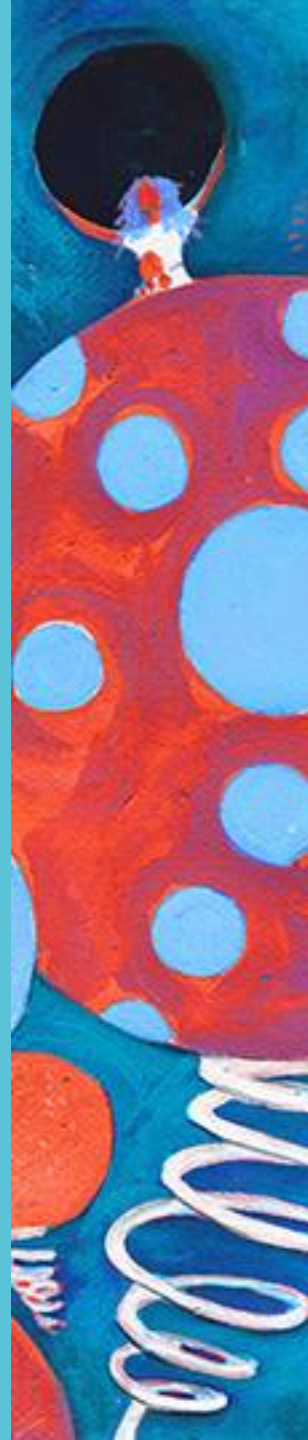
Recognition

National Charity League (NCL)
2021 Volunteer Award



National Charity League, Inc.[®]

Annual Meeting 2020-2021 |
Resilience



 *National Charity League, Inc.®*



National Charity League (NCL)

Annual Meeting 2020-2021 |
Resilience



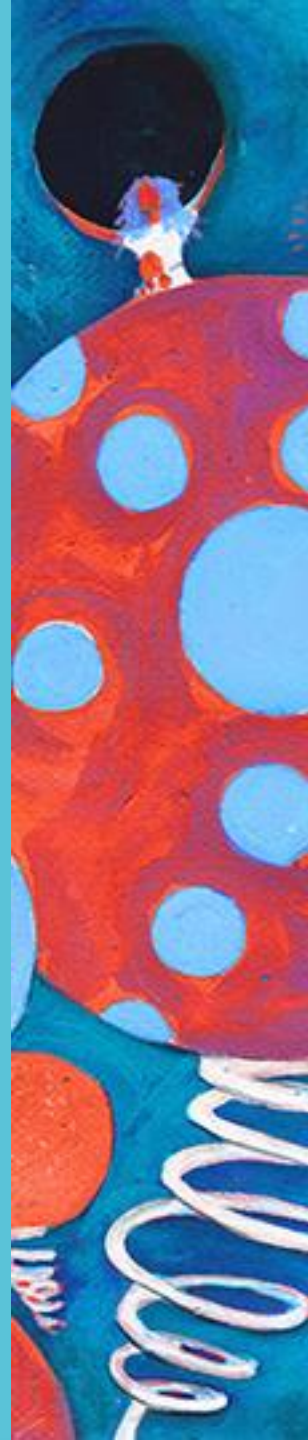


Recognition

Making Life Better (MLB)
2021 Corporate Sponsor Award



Annual Meeting 2020-2021 |
Resilience





Making Life Better Glenview (MLB)

Annual Meeting 2020-2021 | Resilience



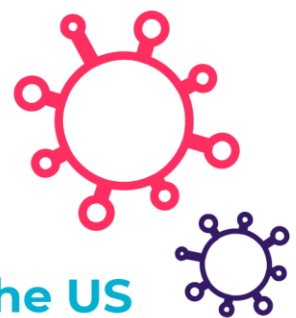
Clinical Report

Jeni Brickman, MSW, LCSW
YS Clinical Director

Annual Meeting 2020-2021 |
Resilience



How is the **pandemic** affecting our children's **mental health**?

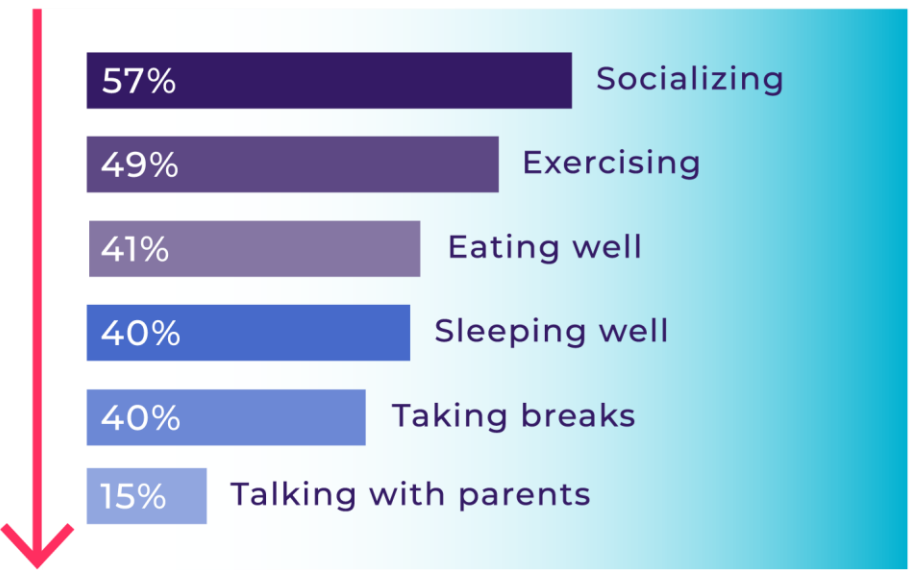


Among 1,000 parents polled across the US

69%

say the pandemic is the worst thing to happen to their child.

Which pillars of mental health have been compromised?



67%

wish they'd been more vigilant about their child's mental health from the beginning.



Demand for our specialized,
yet affordable therapy services

↑ increased by
35%

How Youth Services can help...
\$278,000 in therapy scholarships

*Therapy scholarships represent the amount subsidized for families who lack adequate health insurance coverage for mental health services.



Ways we are increasing capacity

- ▶ Hiring additional therapists
- ▶ Increasing number of therapy groups
- ▶ Partnering with local school districts to provide therapy on-site during the school day



Watch us grow!

1439 —————> **5901** therapy sessions

After school groups grew from
3 communities —————> **5** communities!

Social Skills Group

Then = 3 social skills groups

Now = 4 social skills groups, 2 process groups and a DBT group

Pride Program

From nothing to thriving in less than 5 years!

prideSUPPORT was **2.5x** higher than last year

In FY2021 we had **2x** the group intakes for program participants

Our pride program is currently running 5 support groups

FY 2017 to FY 2021

Annual Meeting 2020-2021 |

Resilience



Our Clients

Are struggling with:



Returning to social situations & increases in social anxiety



Feeling behind in school due to e-learning



Managing overscheduled lives after Covid slowdown



Long waits for psychiatric care & medication evals

- ! Outpatient therapists are also managing extremely intense caseloads

Our Clients

Are also:



Very happy to be back
in the YS building!



Pride Youth are
feeling empowered
to stay Radically
Optimistic



The SAIL program now
includes additional
grade levels



More young people
feel comfortable
talking about mental
health and ask for help

Our Staff

- ➔ Continuing to adapt to virtual therapy
- ➔ Clients in college are continuing services
- ➔ Schedules are becoming increasingly complicated
- ➔ Providing in person groups while maintaining safety precautions can be challenging
- ➔ Increased anxiety, depression, behavioral incidents and substance use at school
- ➔ Health and safeties have increased



Our Commitment to Improvement



Internship
Program



Racial Justice
Committee



Action Camp
for Pride Youth



Summer at Flick



Committee
Work

We always do more



Spotlight

Stefany Nilsen, MA, LPC
YS Clinician

Spanish Speaking Mom's Group



Program Spotlight

- Need and evolution
- Three-fold Purpose
 - Community
 - Support
 - Education
- Examples
 - Covid
 - Celebrations



Spanish Speaking Mom's Group

Annual Meeting 2020-2021 |
Resiliencia



Jess Levine, MSW, LCSW
YS Clinician

CaseStudy

Annual Meeting 2020-2021 |
Resilience



Individual Therapy Case Study

- 19 year old cisgender female
- Suicidality and history of self-harm
- Early childhood trauma
- Academic challenges
- Resilience





Thank You to Our Generous FY21 Corporate Partners

MAKING LIFE BETTER



GLENVIEW BANK & TRUST | NORTHVIEW BANK & TRUST
NORTHBROOK BANK & TRUST

Closing & Thank You

Amy O'Leary
YS Executive Director

Annual Meeting 2020-2021 |
Resilience

